



Webbs
Helping people move since 1994

Simmonds Road | Walsall | WS3 3PU

Asking Price £320,000

Webbs
estate agents

Summary

****FOUR/FIVE BEDROOM HOME**OPEN PLAN LIVING KITCHEN DINER**CONSERVATORY TO THE REAR**DETACHED GARAGE**DETACHED GARAGE/STORAGE ROOM**ENSUITE TO MASTER BEDROOM**CUL-DE-SAC LOCATION**PERFECT FAMILY HOME****

Nestled in the highly sought-after Simmonds Road, Walsall, this impressive semi-detached house offers a perfect blend of modern living and comfort. With five well-proportioned bedrooms, including a master suite with an en-suite bathroom, this home is ideal for families seeking space and convenience. Upon entering, you are greeted by a welcoming entrance porch that leads into a spacious hallway. The generous lounge provides a perfect setting for relaxation, while an additional reception room, which can also serve as the fifth bedroom, offers versatility to suit your needs. The heart of the home is undoubtedly the large, modern fitted kitchen that seamlessly flows into a dining area, creating an inviting space for family gatherings and entertaining guests. A delightful conservatory extends from the kitchen, providing a lovely view of the rear garden. The first floor boasts three further generous bedrooms, ensuring ample space for family members or guests. A well-appointed family bathroom completes this level, catering to the needs of the household.

Key Features

- FOUR/FIVE BEDROOM SEMI DETACHED HOME
- DETACHED GARDEN ROOM/STORAGE ROOM
- CONSERVATORY TO THE REAR
- BEDROOM FIVE ON THE GROUND FLOOR
- PERFECT FAMILY HOME
- DETACHED GARAGE
- OPEN PLAN LIVING KITCHEN DINER
- EN SUITE TO MASTER BEDROOM
- CUL-DE-SAC LOCATION
- CALL WEBBS TO SECURE YOUR VIEWING ON 01922 663399!!

Rooms and Dimensions

Entrance Porch

2'9" x 5'4" (0.85m x 1.63m)

Hall

12'0" x 5'11" (3.68m x 1.81m)

Lounge

14'10" x 11'5" (4.53m x 3.50m)

Kitchen Living Dining Room

29'9" x 9'10" (9.09m x 3.02m)

Conservatory

9'0" x 9'11" (2.75m x 3.03m)

Reception Room 2/ Bedroom Five

15'7" x 7'10" (4.76m x 2.41m)

First Floor Landing

Mater Bedroom

16'0" x 8'0" (4.88m x 2.44m)

En Suite

4'3" x 7'10" (1.30m x 2.40m)

Bedroom Two

14'10" x 10'4" (4.53m x 3.17m)

Bedroom Three

9'10" x 9'11" (3.01m x 3.03m)

Bedroom Four

9'4" x 7'0" (2.87m x 2.15m)

Family Bathroom

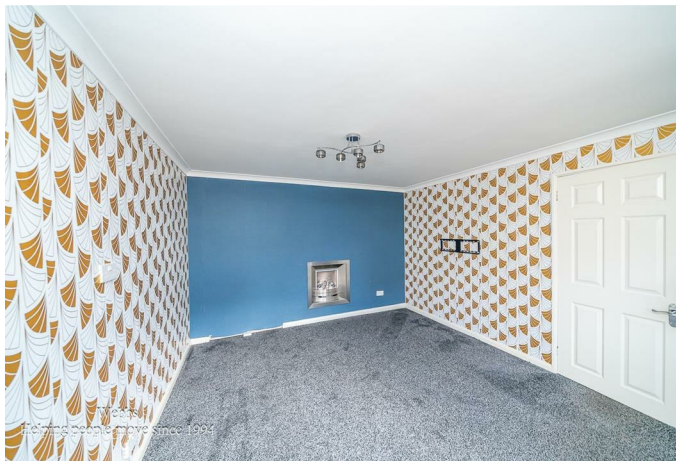
5'4" x 7'5" (1.65m x 2.27m)

Detached Garage

Garden/ Store Room

Identification Checks B

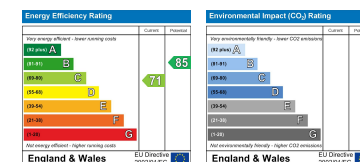






Webbs
estate agents

Webbs Estate Agents - endeavour to maintain accurate depictions of properties in Virtual Tours, Floor Plans and descriptions, however, these are intended only as a guide and purchasers must satisfy themselves by personal inspection.



212 High Street, Bloxwich, Walsall, WS3 3LA

Tel: 01922 663399 | Email: bloxwich@webbestateagents.co.uk | www.webbestateagents.co.uk

Webbs
estate agents